



DATASHEET

AI-Security Engineering Services

Enhancing Security Operations with
Intelligence and Efficiency

Contemporary Cybersecurity Challenges



Enterprises today must secure complex digital ecosystems as they scale AI adoption. Key challenges include:



Alert Noise and Manual Effort

High volumes of alerts and scan results require significant human triage effort, slowing remediation.



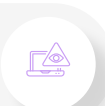
Skill and Expertise Limitations

Organizations require domain-specific AI security expertise to build contextual models and automation pipelines.



Fragmented Toolchains

Security tools operate in silos, limiting correlation across SIEM, scanners, ticketing platforms, CMDB, and threat intelligence sources.



Limited Contextual Risk Visibility

Without behavioral context or correlation, risk prioritization is inconsistent and often inaccurate.



Slow Remediation Cycles

Manual triage and prioritization increase time-to-remediate and create backlogs.



AI-Security Engineering Capabilities

Our integrated capabilities combine security, engineering, and artificial intelligence to build dependable digital solutions that support secure innovation and long-term growth.

AI Intelligence

AI-driven automation and intelligent analytics.

Engineer AI

Building AI systems with security, trust, and governance built in from the start.

Trusted AI Expertise

Specialist AI practitioners deliver secure, intelligent, and scalable solutions.

AI Enablement

Empowering organizations to confidently advance their AI journey.

AI-Security Engineering Services

AI-Security Engineering focuses on artificial intelligence to simplify, accelerate, and strengthen security operations through intelligent automation and contextual analytics.



AI-Powered Customization

- Domain-specific ML/NLP model training for security use cases
- Context-aware risk scoring aligned to MITRE ATT&CK and NIST CSF
- GenAI/LLM agents for SOC, GRC, and DevSecOps workflows



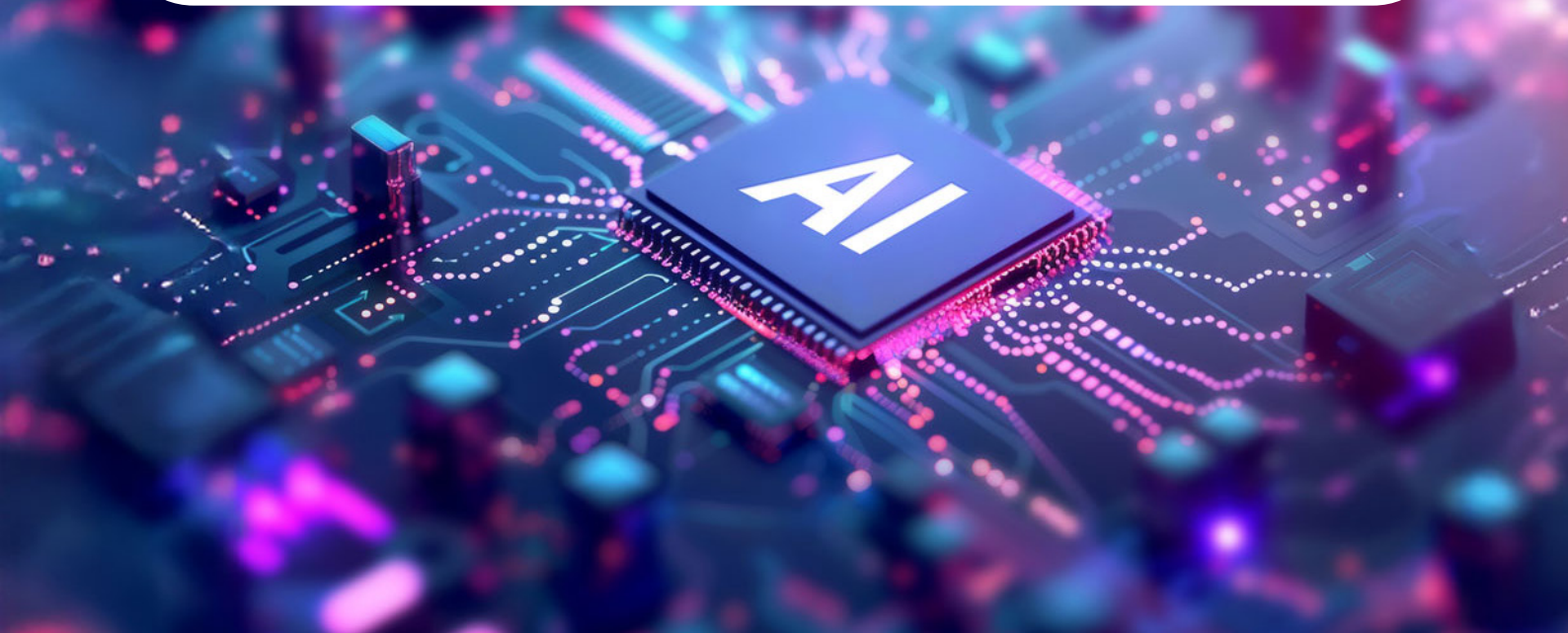
AI-Driven Security Development

- AI-powered security report analysis for reduced noise and triage
- Automated compliance checks (PCI-DSS, HIPAA, CIS Benchmarks) using AI-driven audit bots
- Engineering AI systems with built-in security and trust

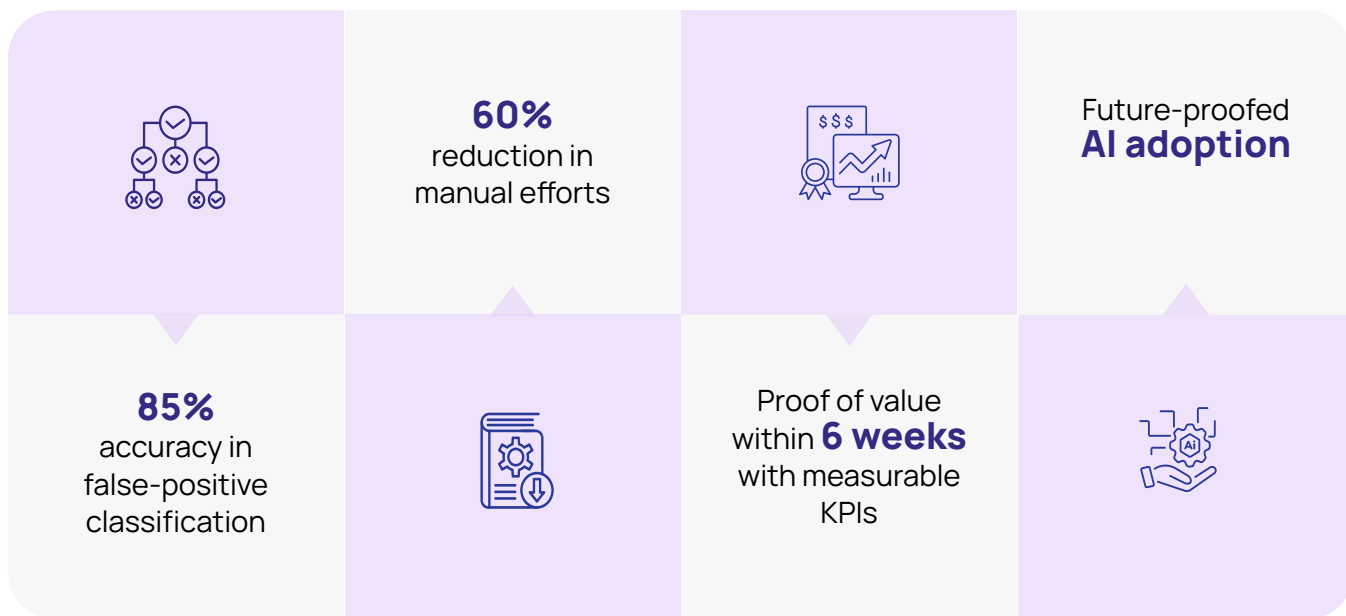


AI Enablement for Cybersecurity

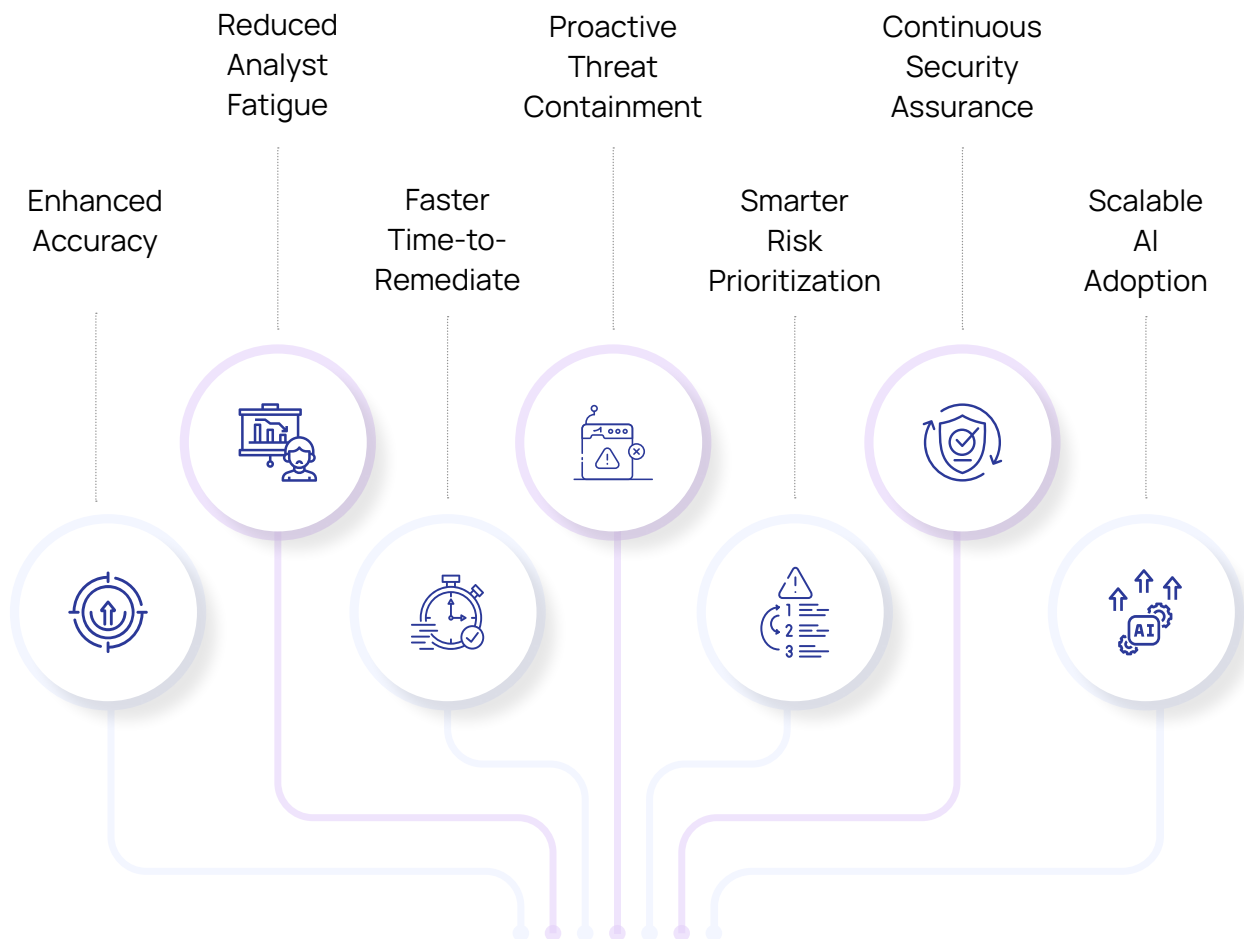
- AI strategy and roadmap for Security Automation (custom for SOC, DevSecOps, GRC, DLP, etc.)
- Custom ML/NLP models for use cases like alert triage, scan optimization, false positive reduction
- Integration with existing toolchain (SIEM, SAST/DAST, ticketing, CMDB, threat intel platforms)
- MLOps for cybersecurity, including pipeline setup, model retraining, feedback loop integration, etc



Key Highlights



Business Outcomes





Security Engineering Innovations

CodeSign

Automated Code Signing to ensure the integrity of software and establish a trust-based relationship between consumer and publisher.

IoTfence

SaaS-based platform for large-scale management of biometric authentication devices for a national identity platform.

ThreatAegis

Advanced threat-hunting platform built for speed and efficiency with exceptional scalability, tailored to the specific needs of customers.

Filtra AI

AI-powered with contextual intelligence, Filtra AI streamlines vulnerability management by separating false positives and prioritizing real risks.

About NuSummit Cybersecurity

NuSummit Cybersecurity helps build and transform cybersecurity postures to enable businesses to mitigate risks. We are a pure-play cybersecurity services company with deep expertise in Identity and Access Management, Risk Advisory, Security Verification, Managed Detection and Response, and Security Engineering services.

Our unique products and services help businesses build and transform security postures while mitigating risks. Our focus is to strengthen security resilience by minimizing the occurrence of attacks, threats, and risks so that you can drive change, innovate, and accelerate growth.

For more information, visit us at cybersecurity.nusummit.com or write to us at cybersales@nusummit.com

**Dallas | Jersey City | Cupertino | Ottawa | Riyadh | Dubai
Mumbai | New Delhi | Bangalore**

© NuSummit Cybersecurity Limited. All rights reserved.

All trademarks, logos and brand names are the property of their respective owners. All company, product and service names used are for identification purposes only. Use of these names, trademarks and brands does not imply endorsement.

Follow us at:   