

Enhancing Security with Real-Time Monitoring and Proactive Threat Detection

Data breaches can expose sensitive information, leading to identity theft, brand attacks, and even the loss of valuable intellectual property. This can cripple innovation and erode your competitive edge.



Dark Web Breach and IP Theft



90%

of the internet comprises of deep web. Dark web includes less than 0.01% of all online content.



7.5 billion

pieces of information circulate on the dark web globally, with a 15.9% increase in reports.



57%

of organizations see weekly or daily phishing attempts.

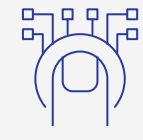


94%

of organizations have reported email security incidents.



WormGPT, is adept at AI-driven phishing, especially Business Email Compromise (BEC) attacks.



\$20 billion

was the estimated loss due to identity fraud in 2022, and 15.4 million adults are affected by identity fraud in the US.



1,265%

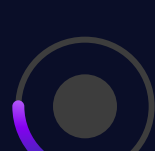
increase in phishing attacks in 2023 due to GenAI.



1.3 million

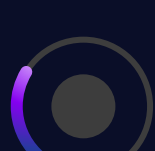
phishing attacks in the second quarter of 2023, representing the 3rd highest quarterly total.

Every year, the National Intellectual Property Rights Coordination Center (IPRCC) reports on enforcement actions taken by the US government against IP theft, counterfeit goods, and fraud. The IPRCC has seen enforcement against these crimes increase substantially in the last year. According to the IPRCC:



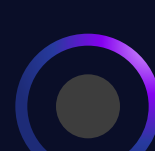
Cases initiated against IP theft are up

21%



Criminal arrests are up

39%



Indictments are up

99%



Convictions are up

29%



Seizure Incidents have seen a slight decline by

9%

The total estimated cost of the theft of American intellectual property is estimated to have gone up from \$ 822.3 million to \$112 billion. An increase of



36%



TYPES OF ATTACKS

Attackers use advanced techniques like crypto-jacking and polymorphism

30%

more 'cryptojacking' attacks have targeted computer systems.

94%

of malicious software is made up of polymorphic malware.

SECTOR-WISE THREAT

In the dark web, the most hacked accounts are related to:

Entertainment sites

56.6%

E-commerce

16.4%

Social media

11.9%

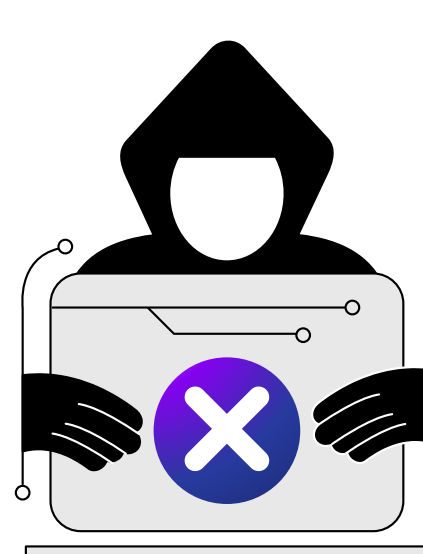
Payment services

6.2%

Financial sites

4.8%

(websites and forums, such as banking sites.)



23.5%

of all phishing attacks targeted the financial sector, according to the Anti-Phishing Working Group (APWG), making it the primary target.



Insights into emerging threats and vulnerabilities for proactive defense



Data recovery from the dark web



Website threat protection by mitigating phishing sites and baiting

How to Prevent Identity Theft, Brand Attacks, and IP Theft



Real-time threat alerts and risk mitigation assistance via email/SMS/API/web services



Real-time identification of compromised high-valued accounts



Legal enforcement

The Power of NuSummit Cybersecurity + iZOOlogic

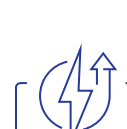
As a premier Managed Security Services Provider, NuSummit Cybersecurity collaborates with iZOOlogic to deliver unparalleled solutions 24x7 from the ISO-certified Cyber Defense Centers (CDC) for diverse industry verticals in North America, India, and the Middle East. The combined solutions and services will enable enterprises to manage their online security strategies, provide assurance and integrity, reduce fraud risk, maintain compliance, establish trust, and protect the online brand reputation.



200 trained and certified professionals



24x7x365 continuous monitoring



Incident response aligned to NIST Cybersecurity Framework



Single pane visibility through in-depth dashboards



Maintenance and operation of security monitoring infrastructure

Contact Us Today to Enhance Your Threat Intelligence and Incident Response Capabilities.

Source

Dark web breach and IP theft

<https://support.google.com/googleone/answer/12262331?hl=en>
<https://info.greathorn.com/hubfs/Reports/2021-Business-Email-Compromise-Report-GreatHorn.pdf>
<https://www.forbes.com/advisor/education/it-and-tech/cybersecurity-statistics/#Sources>
<https://www.avast.com/c-phishing>
<https://blog.avast.com/business-email-compromise-attacks-avast>
<https://www.avast.com/c-dark-web-facts>

Types of Attacks

<https://indianexpress.com/article/explained/everyday-explainers/explained-what-is-cryptojacking-cyber-attacks-carried-out-by-crypto-miners-8055585/#:~:text='Cryptojacking'%20attacks%20on%20computer%20systems,a%20US%20based%20cybersecurity%20firm>

Sector-wise threat

<https://www.crif.ch/en/news-events/news/cyber-attacks-in-2023-45-increase-in-data-theft-on-the-dark-web/>
<https://www.techtarget.com/whatis/34-Cybersecurity-Statistics-to-Lose-Sleep-Over-in-2020>